

## ASSEMBLY INSTRUCTION FOR COMMERCIAL TREE

- 1) Take out the metal frame from the cage



(Fig. 1)

- 2) Take out the last section frame E, put E1 and E2 together as fig. 2



(Fig. 2)

- 3) Insert the provided U pine to secure the two sections together as fig. 3



(fig. 3)

4) Insert the flat metal into the U screw as fig. 4



(fig. 4)

5) Tightened the screw with wing nuts included as fig. 5

6) Repeat it for the lower section of E frame as fig. 6



(fig. 5)



(fig. 6)

7) Insert the tree stand as fig. 7



(fig. 7)

8) Insert the screw provided from the removal stand to metal frame as fig. 8 and fig. 9



(fig. 8)



(fig. 9)

9) Repeat every part of the frame E as fig. 10



10) Put the section D frame on top of the completed section E Frame as fig. 11 and fig. 12



(fig. 11)

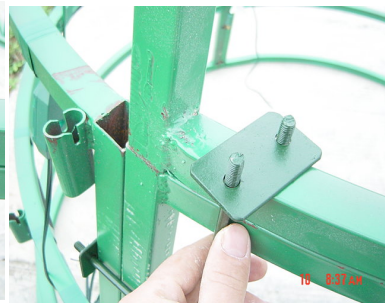


(fig. 12)

11) Insert the screw provided to tighten the metal frame section D and section E as fig. 13, fig. 14, and fig. 15



(fig. 13)



(fig.14)



(fig. 15)

12) Tightened the screw with wing nuts included as fig. 16

13) Repeat it for the lower section of E frame as fig. 17



(fig. 16)



(fig. 17)

14) Put the section C frame on top of the completed section D

Frame as fig. 18, fig. 19, fig. 20, fig. 21



(fig. 18)



(fig. 19)



(fig. 20)

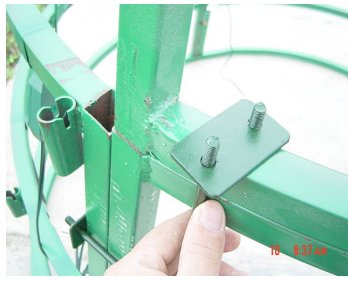


(fig. 21)

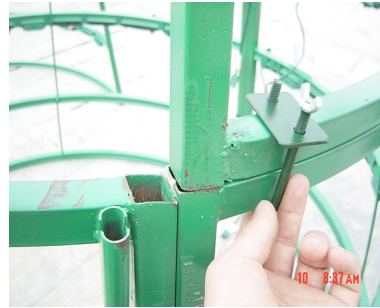
15) Insert the screw provided to tighten the metal frame section C and and section D as fig. 22, fig. 23, and fig. 24



(fig. 22)



(fig. 23)



(fig. 24)

16) Put the section B frame on top of the completed section C Frame as fig. 25, fig. 26

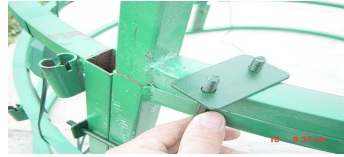


(fig. 25)



(fig. 26)

17) Insert the screw provided to tighten the metal frame section B and and section C as fig. 27, fig. 28, and fig. 29



18) Insert the pole for the top section of the commercial tree as fig. 30 and fig. 31



(fig. 30)

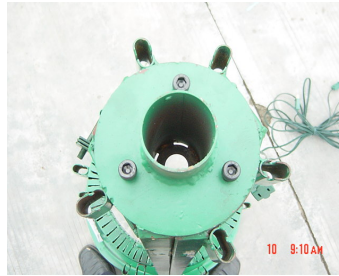


(fig. 31)

19) Tighten the pole and metal frame section B with included screws as fig. 32 and fig. 33



(fig. 32)



(fig. 33)

20) Here is the completed metal frame as fig. 34  
Ready for your commercial tree



(fig. 34)